

[Skip to content](#)

Manuals+

User Manuals Simplified.



JBL HDI-1600 HDI SERIES Loudspeakers Owner’s Manual

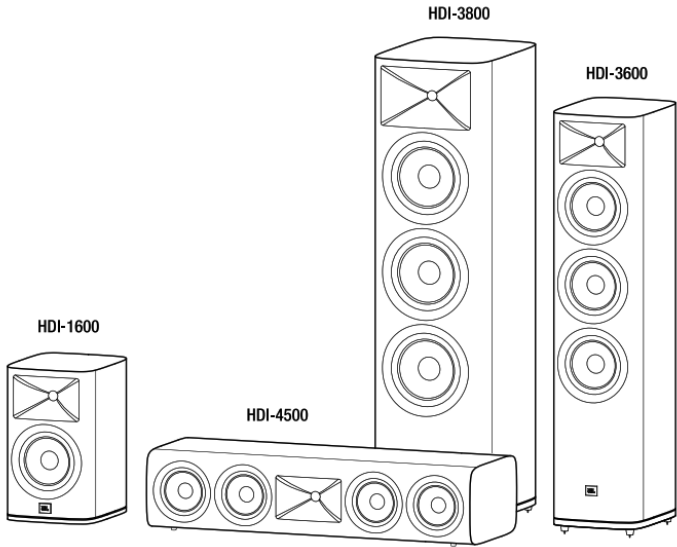
September 24, 2022September 24, 2022 [Leave a comment on JBL HDI-1600 HDI SERIES Loudspeakers Owner’s Manual](#)

[Home](#) » [JBL](#) » JBL HDI-1600 HDI SERIES Loudspeakers Owner’s Manual

Document



HDI-1600 HDI SERIES Loudspeakers
Owner’s Manual



Contents [hide](#)

- [1 HDI-1600 HDI SERIES Loudspeakers](#)
- [2 INCLUDED ITEMS](#)
- [3 PLACEMENT](#)
- [4 REMOVING THE GRILLES](#)
- [5 CONNECTIONS](#)
- [6 CARING FOR YOUR SPEAKERS](#)
- [7 SPECIFICATIONS](#)
- [8 Documents / Resources](#)
- [9 Related Posts](#)

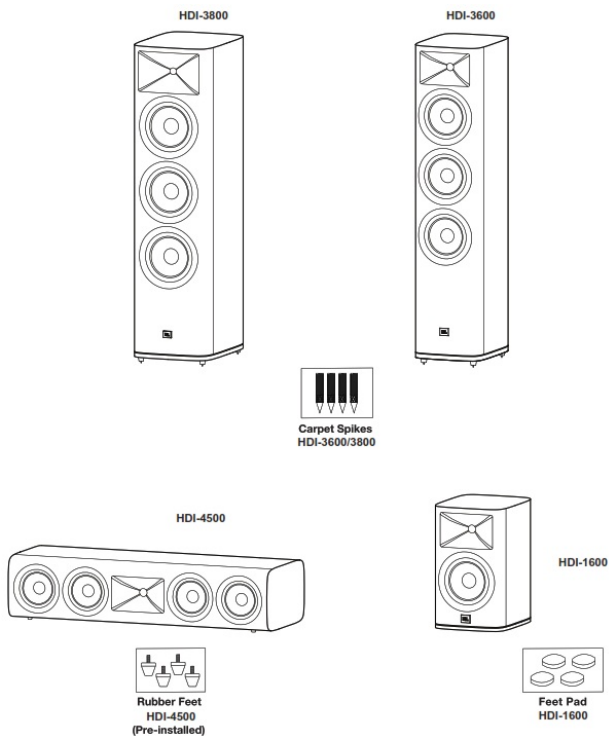
HDI-1600 HDI SERIES Loudspeakers

THANK YOU FOR CHOOSING THIS JBL® PRODUCT

For more than 60 years, JBL® engineers have been involved in every aspect of music and film recording and reproduction, from live performances to the recordings you play on the go and in your home, car, or office. We're confident that the JBL system you have chosen will provide every note of enjoyment you expect – and that when you think about purchasing additional audio equipment for your home, car, or office, you will once again choose JBL products.

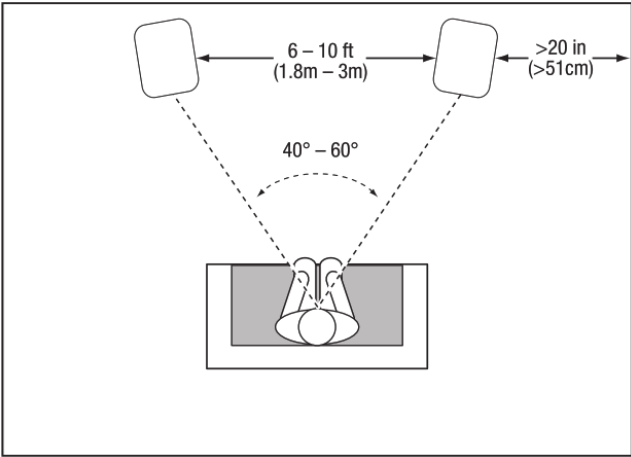
Please take a moment to register your new product on our Web site, www.jblsynthesis.com. Registering enables us to keep you posted on our latest advancements and helps us to understand our customers and build products that meet their needs.

INCLUDED ITEMS



PLACEMENT

HDI-3600/3800 FLOOR STANDING LOUDSPEAKER, HDI-1600 BOOKSHELF LOUDSPEAKER For the best results, place the speakers 6 – 10 feet (1.8m – 3m) apart. Angling the speakers toward the listening position can improve stereo imaging. The speakers will produce the most accurate stereo soundstage when the angle between the listener and the

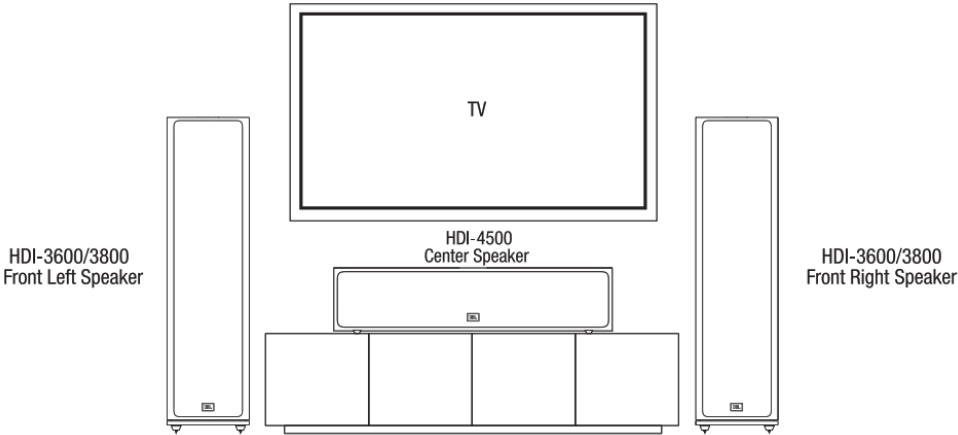


speakers is between 40 and 60 degrees. Generally, the bass output will increase as the speaker is moved closer to a wall or corner.

For the best performance, we recommend that you place the speakers at least 20 inches (51cm) away from the side walls.

HDI-4500 CENTER CHANNEL SPEAKER

You should place the 1-D1-4500 center speaker directly above or below the center of your TV screen. The center of the speaker's horn should be no more than 2 feet (61cm) above or below the centers of the front left and front right speakers' horns. If your TV set is deep enough, you can set the center speaker on top of the TV, with the speaker's front edge even with

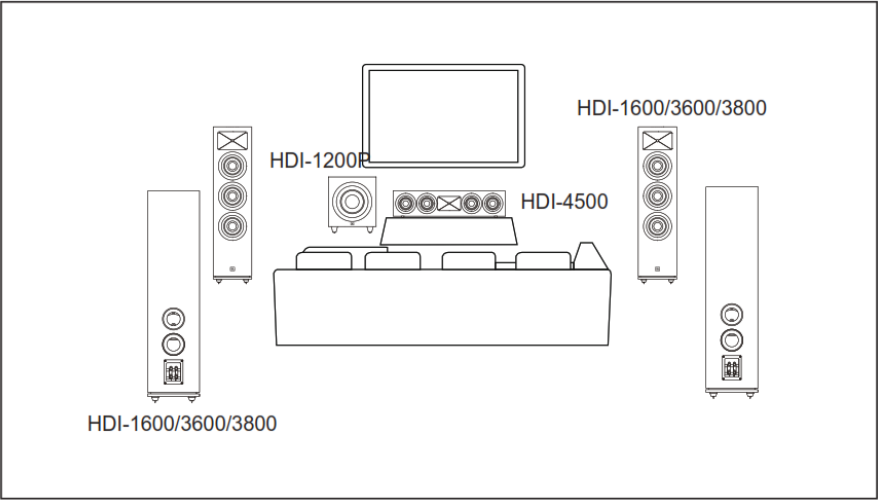


the TV's front edge.

Note: You can place HDI-4500 below or above the TV.
Note: For better audio listening performance, please align the center speaker towards your head level position.

JBL HDI SERIES LOUDSPEAKER – HOME THEATER SPEAKERS 5.1 PLACEMENT SUGGESTION LAYOUT DIAGRAM

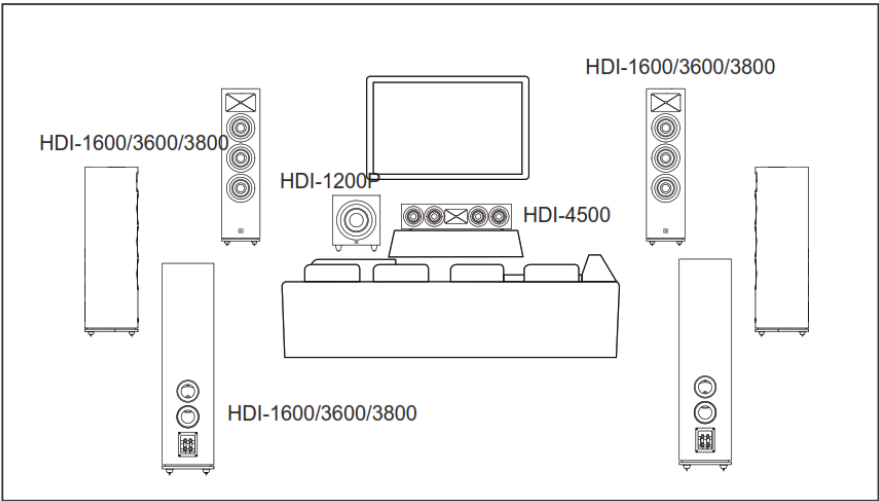
When you use HDI-1600/3600/3800/4500 speakers as surround-channel speakers in a 5.1-channel system, place them slightly behind the listening position, facing each other. Ideally, they should be 3 – 4 feet (0.9m – 1.2m) above the floor. An alternate location would be on a wall behind the listening position, facing forward. The surround speakers should not call attention to themselves while they're playing. Experiment with their placement until you hear a diffuse, ambient sound accompanying the sounds that you hear from the front left, front



right, and center speakers.

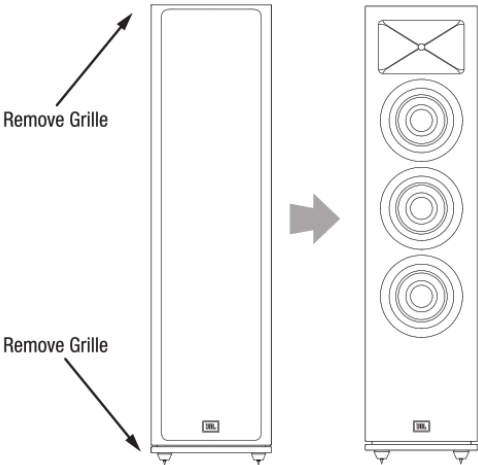
JBL HDI SERIES LOUDSPEAKER – HOME THEATER SPEAKERS 7.1 PLACEMENT SUGGESTION LAYOUT DIAGRAM

When you use HDI-1600/3600/3800/4500 speakers as surround-channel speakers in a 7.1-channel system, place the surround side speakers directly to the sides of the listening position, at least 3 – 4 feet (0.9m – 1.2m) above the floor. Place the surround back speakers on the wall behind the listening position, also at least 3 – 4 feet (0.9m – 1.2m) above the



floor and 3 – 6 feet (0.9m – 1.8m) apart.

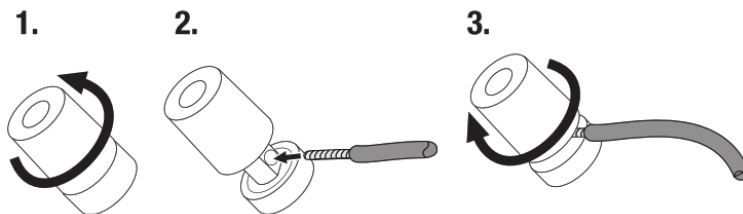
REMOVING THE GRILLES



You can remove the HDI series loudspeaker grilles by pulling them away from the enclosure.

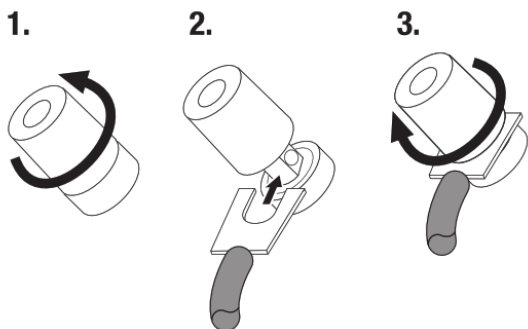
CONNECTIONS

CAUTION: Make sure that all of the system's electrical components are turned OFF (and preferably unplugged from their AC outlets) before making any connections. Speakers and amplifiers have corresponding positive and negative ("+" and "-") connectors. All HDI series speakers have connectors that are marked "+" and "-" on the terminal-cup assembly. Additionally, the "+" connectors have red markings, while the "-" connectors have black markings. To ensure proper polarity, connect each "+" connector on the back of the amplifier or receiver to the respective "+" (red) connector on each speaker. Connect the "-" connectors in a similar way. Do not reverse polarities (i.e., "+" to "-" or "-" to "+") when making connections. Doing so will cause poor stereo imaging and diminished bass performance. **IMPORTANT:** Make sure the "+" and "-" wires or connectors do not touch each other or the other terminal. Touching wires can cause a short circuit that can damage your receiver or amplifier. The HDI series speakers' gold-plated speaker connectors can accept a variety of wire connector types. bare wire pin connectors, spade connectors, and banana connectors.

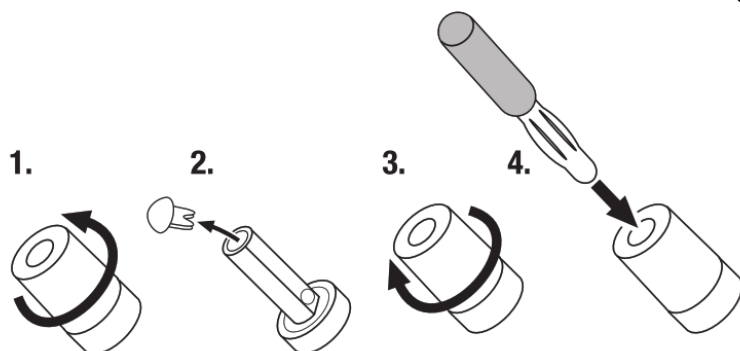


USING BARE WIRE OR PIN CONNECTORS:

USING SPADE CONNECTORS:



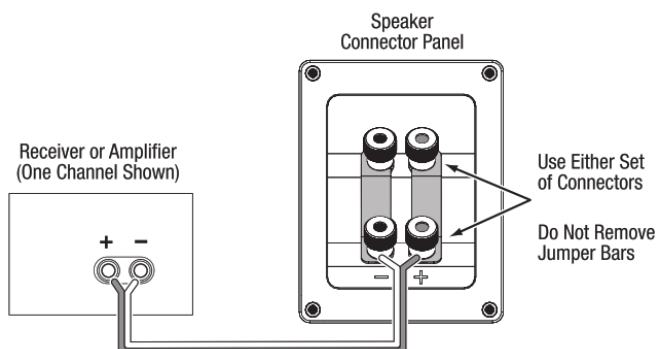
USING BANANA CONNECTORS:



BASIC SINGLE-WIRE CONNECTION

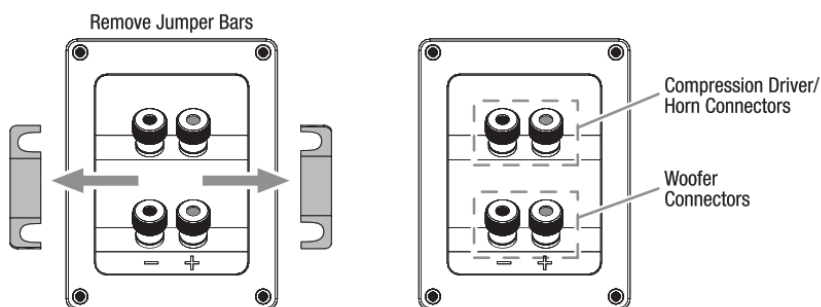
To connect the speakers using a single wire, connect the amplifier to each speaker as shown in the illustration below. You can use either set of connectors on the connector panel.

IMPORTANT: Do not remove the metal jumper bars from between the two sets of connectors when connecting the speaker wires.



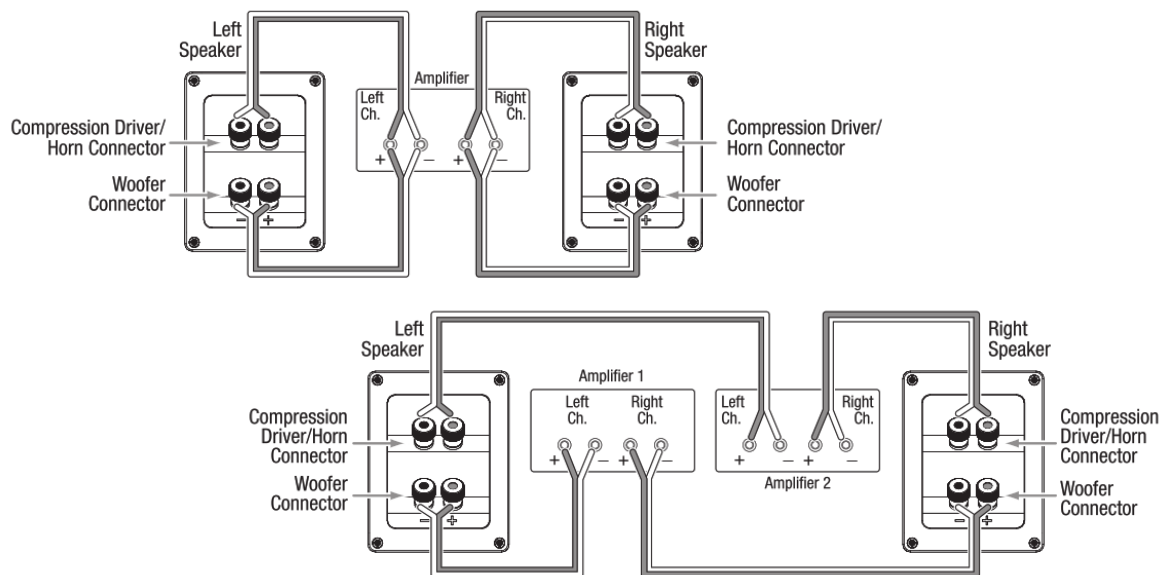
BI-WIRE CONNECTION

HDI series loudspeakers connector panels that have two sets of input connectors are joined by metal jumper bars. The upper set of connectors is for the compression driver/horn assembly, and the lower set of connectors is for the woofer(s). This arrangement allows you to bi-wire the speakers using a single stereo amplifier or using two stereo amplifiers. Bi-wiring can offer performance advantages and more flexibility in a power-amplifier selection over a conventional single-wire connection.



Before bi-wiring, the speakers, remove the jumper bars.

SINGLE-AMPLIFIER BI-WIRING



DUAL-AMPLIFIER BI-WIRING

For more information about various speaker-wire and connection options, contact your local JBL dealer.

CARING FOR YOUR SPEAKERS

- Wipe the cabinet with a clean, dry cloth to remove dust. A damp cloth may dull the cabinet's finish. Do not use volatile liquids such as benzene, paint thinner or alcohol on the cabinet.
- Do not spray insecticide near the cabinet.
- To remove dust from the grille fabric, use a vacuum cleaner set to low suction.
- Never apply suction or pressurized air to the horn opening.
- Do not wash the grilles in water, as it may fade the color or make it uneven.
- If the surfaces of the woofer cones become dusty, you can carefully sweep them clean with a soft, dry calligraphy brush or paintbrush. Do not use a damp cloth.

SPECIFICATIONS

MODEL	HDI-1600	HDI-3600	HDI-3800	HDI-4500
DESCRIPTION	2-way bookshelf loudspeaker	Triple 6.5", 2.5-way floor-standing loudspeaker	Triple 8", 2.5-way floor-standing loudspeaker	Quad 5.25", 2.5-way center channel loudspeaker
ENCLOSURE TYPE	Bass-reflex design with a rear-firing port	Bass-reflex design with rear-firing port	Bass-reflex design with rear-firing port	Bass-reflex design with a rear-firing port
HF DRIVE COMPONENT	1 inch/ 25mm Teonex compression driver	1 inch/ 25mm Teonex compression driver	1 inch/ 25mm Teonex compression driver	1 inch/ 25mm Teonex compression driver
LF / MF DRIVE components	6.5-inch/ 165mm black aluminum cone, cast-frame woofers	6.5-inch/ 165mm black aluminum cone, cast-frame woofers	8-inch / 200mm black aluminum cone, cast-frame woofers	5.25-inch / 130mm black aluminum cone, cast-frame woofers
CROSSOVER FREQUENCY	1900Hz	900Hz, 2000Hz	800Hz, 1800Hz	600Hz, 2200Hz
SENSITIVITY (2.83V @ 1M)	85dB@1m, 2.83V	90dB@1m, 2.83V	92dB@1m, 2.83V	90dB@1m, 2.83V
NOMINAL IMPEDANCE	4 Ohm	4 Ohm	4 Ohm	4 Ohm
RECOMMENDED AMPLIFIER POWER	150W-200W	200W-250W	250W-300W	200W-250W
Frequency Response	40 Hz – 30k Hz (-6dB)	38 Hz – 30k Hz (-6dB)	37 Hz – 30k Hz (-6dB)	50 Hz – 30k Hz (-6dB)
Dimensions (W x D x H, grille included):	9.06' x11.60' x14.57' (230 x 294.7 x 370mm)	10.04' x13.46' x38.84' (255 x 341.9 x 986.5mm)	11.81' x16.45' x43.33' (300 x 417.8x 1100.5mm)	33.13' x12.30" x7.48' (841.4 x 312.5x 190mm)
Product Weight (grille included):	21.961b(9.96kg)	61.801b(28.03kg)	83.781b(38.00kg)	44.331b(20.11kg)



www.jbl.com/specialtyaudio



HARMAN International Industries, Inc.
8500 Balboa Boulevard, Northridge, CA 91329 USA
www.jblsynthesis.com

© 2020 HARMAN International Industries, Incorporated. All rights reserved.

JBL and HDI (High Definition Imaging) are trademarks of HARMAN International Industries, Incorporated, registered in the United States and/or other countries.

PolyPlas and Symmetrical Field Geometry are trademarks of HARMAN International Industries, Incorporated.

Features, specifications, and appearance are subject to change without notice.

Part No. 950-0563-001

Documents / Resources



[JBL HDI-1600 HDI SERIES Loudspeakers](#) [pdf] Owner's Manual
HDI-1600, HDI SERIES Loudspeakers, HDI-1600 HDI SERIES Loudspeakers, Loudspeakers

Related Posts



[JBL GTO Series Speaker Owner's Manual](#)
JBL GTO Series Speaker Owner's Manual GTO 329 GTO 8629 GTO 329 GTO 429/GTO...

[WHARFEDALE Diamond 12 Series Loudspeakers User Manual](#)

Diamond 12 Series Loudspeakers



[JBL EON ONE MK2 Professional Loudspeakers User Guide](#)
JBL EON ONE MK2 Professional Loudspeakers BATTERY POWERED ONE-HAND CARRY BLUETOOTH AUDIO
LEGENDARY JBL SOUND QUICKSTART GUIDE LISTENING...

[JBL GT-X1500THI GT Series Car Audio Subwoofer Owner's Manual](#)

GT-X1500THI GT Series Car Audio Subwoofer

Leave a comment

Your email address will not be published. Required fields are marked *

Comment *

Name

Email

Website

☐ Save my name, email, and website in this browser for the next time I comment.

Post Comment

[Manuals+](#)

- [home](#)
- [privacy](#)